

DELTA FISH AND AMPHIBIANS STUDY 2000-2003 SAMPLE SITE LOCATIONS



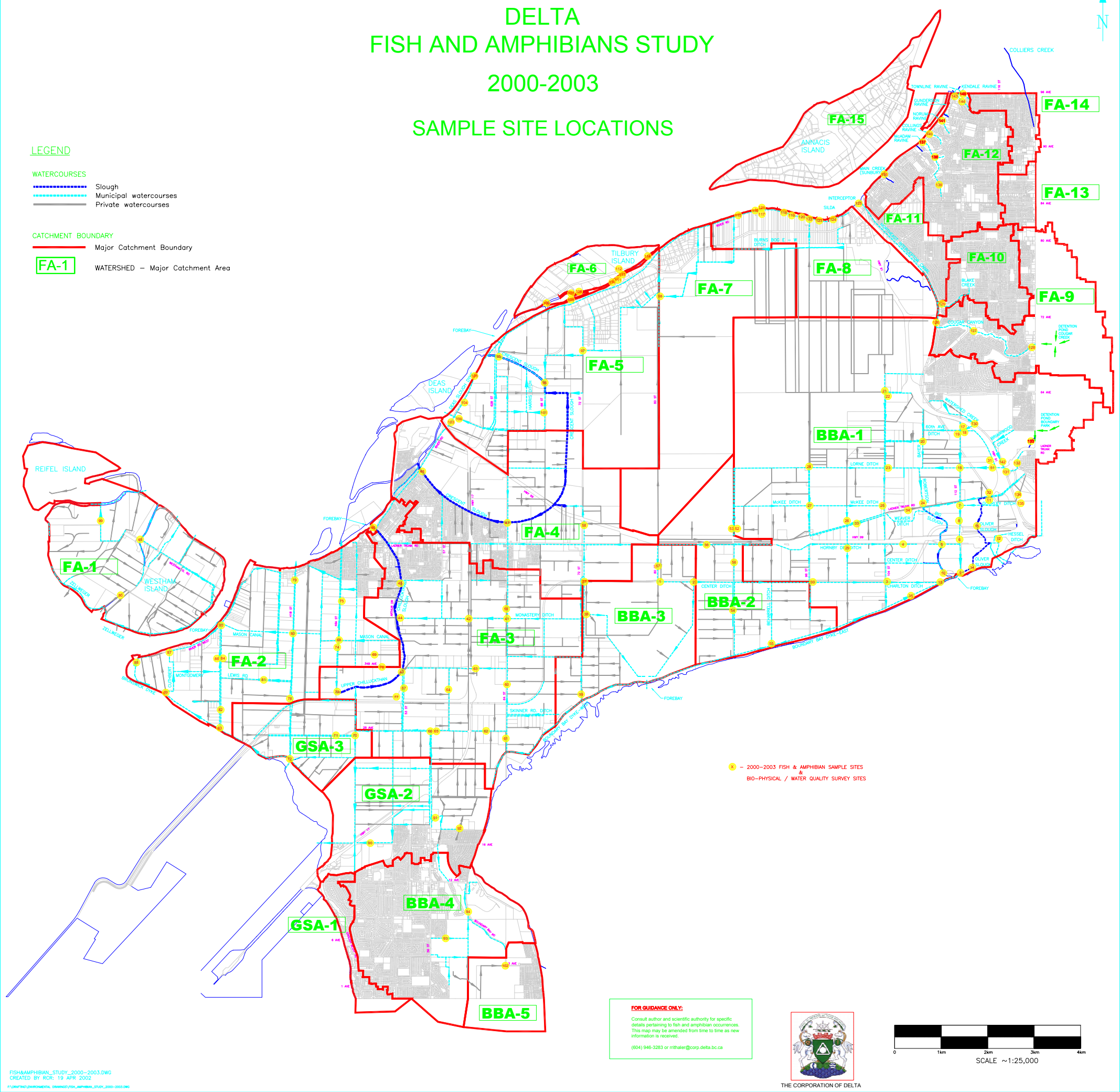
LEGEND

WATERCOURSES

- Slough
- Municipal watercourses
- Private watercourses

CATCHMENT BOUNDARY

- Major Catchment Boundary
- FA-1 WATERSHED – Major Catchment Area



● – 2000-2003 FISH & AMPHIBIAN SAMPLE SITES
&
● – BIO-PHYSICAL / WATER QUALITY SURVEY SITES

FOR GUIDANCE ONLY:

Consult author and scientific authority for specific details pertaining to fish and amphibian occurrences. This map may be amended from time to time as new information is received.
(604) 946-3283 or rithaler@corp.delta.bc.ca



THE CORPORATION OF DELTA

